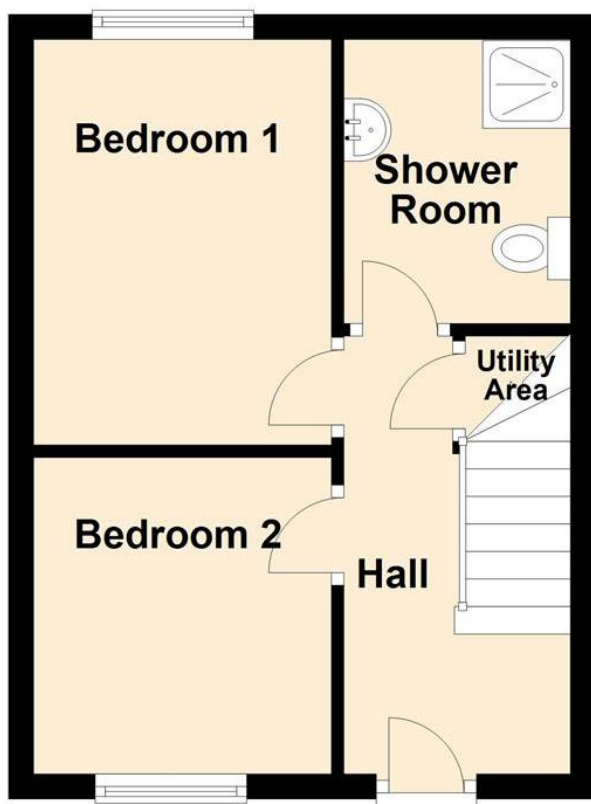


**Ayrshire Close, Chorley****£80,000****22 Ayshire Close, Chorley.jpg**

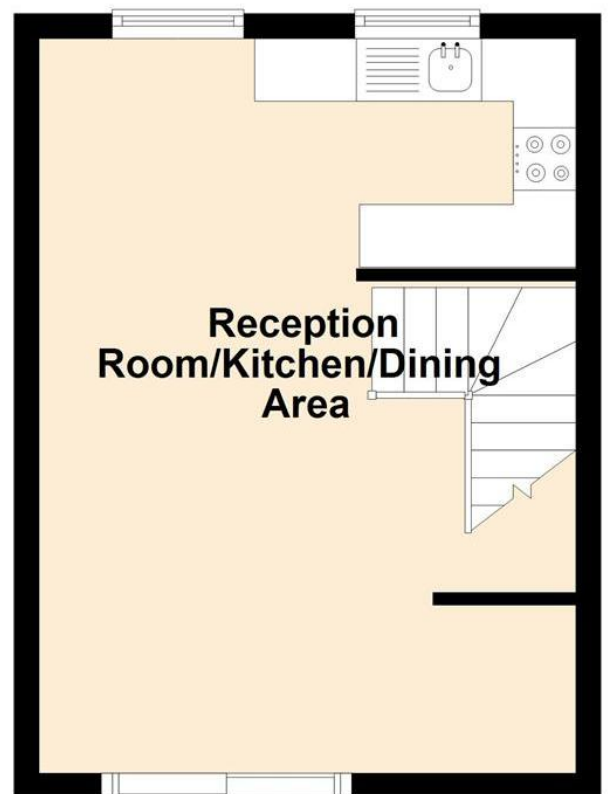
## Ground Floor

Approx. 25.2 sq. metres (270.8 sq. feet)



## First Floor

Approx. 25.2 sq. metres (270.8 sq. feet)

**Total area: approx. 50.3 sq. metres (541.6 sq. feet)**

All floorplans are for guidance only. Not to scale. Please check all dimensions and shapes before making any decisions reliant upon them.

Plan produced using PlanUp.