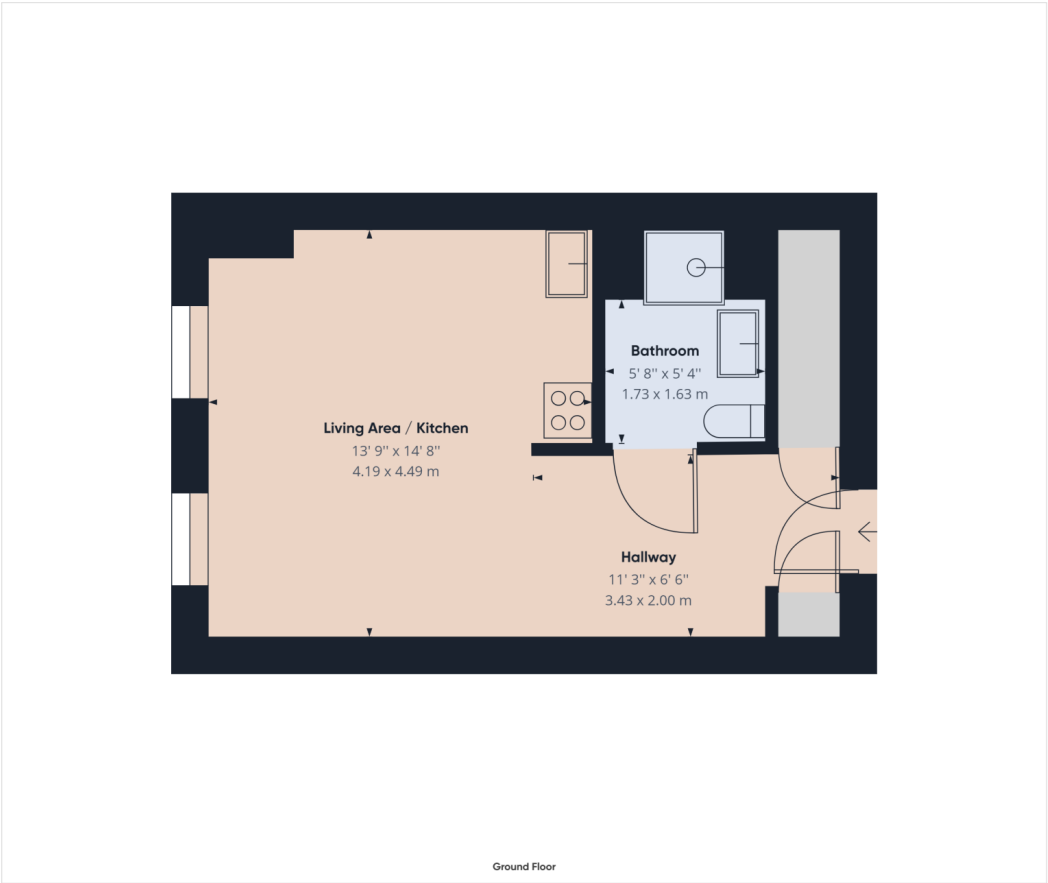


Michigan Point Tower A, 9 Michigan Avenue, Salford...

£95,000

Floorplan



PETER ANTHONY
EST 1986

Approximate total area⁽¹⁾

324.58 ft²
30.15 m²

(1) Excluding balconies and terraces

While every attempt has been made to ensure accuracy, all measurements are approximate, not to scale. This floor plan is for illustrative purposes only.

GIRAFFE360